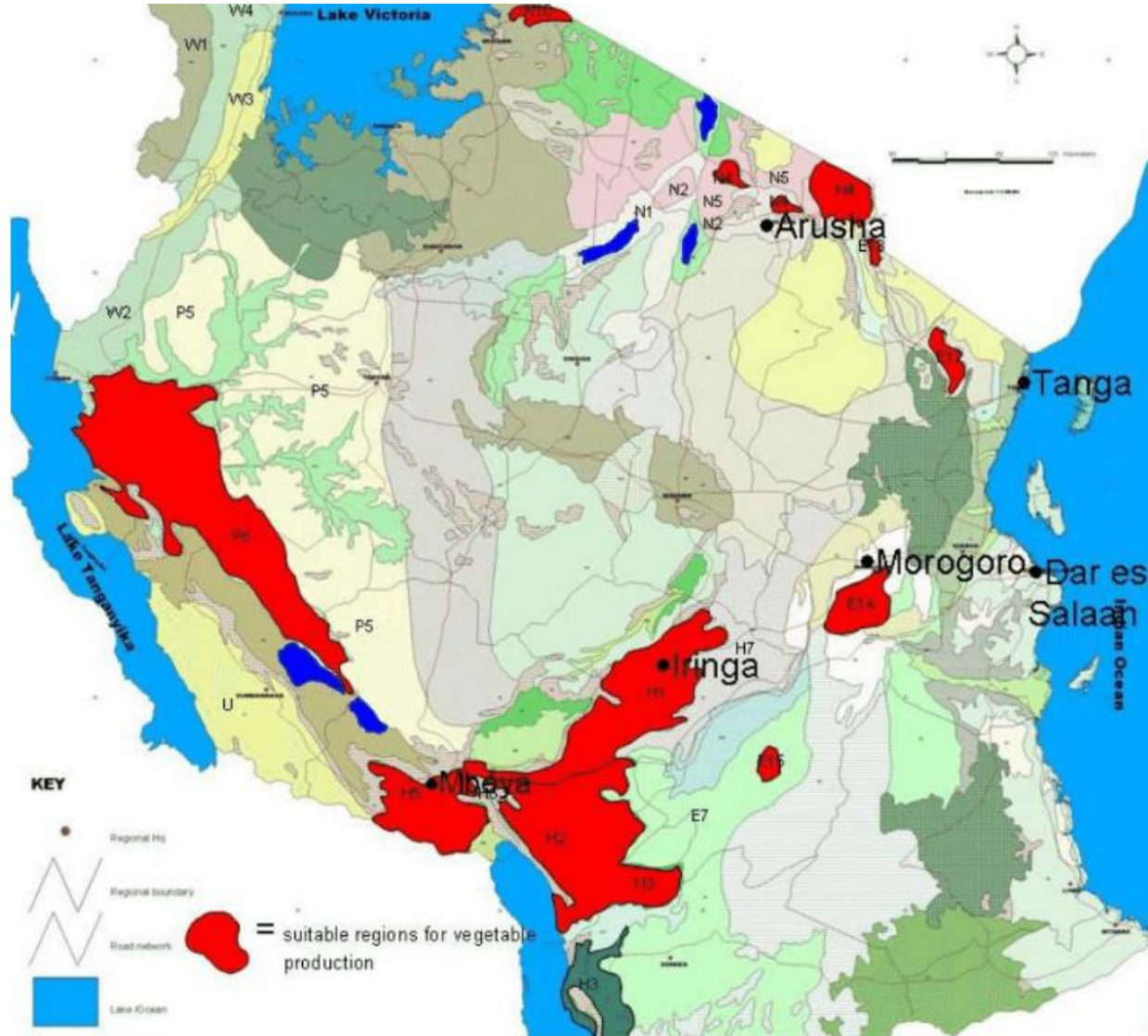


# **TANSHEP Activities in other Region's Context**

TANSHEP Information Sharing Workshop  
December 19, 2019

Horticulture Task Force

# 1. Horticultural Potential Areas of Tanzania



Source (Orig.): Ministry of Agriculture  
[Website]  
[https://www.kilimo.go.tz/maps/Tanzania\\_Rainfed\\_Crop\\_Suitability.jpg](https://www.kilimo.go.tz/maps/Tanzania_Rainfed_Crop_Suitability.jpg)

Source (2<sup>nd</sup>): Overview of the vegetable sector in Tanzania (Feb. 2007), by AfriVeg, H. de Putter, M.J. van Koesveld and C.L.M. de Visser

## 2. Horticultural Production (1)

Table: Production in ton per Region of vegetable in 2002

District	tomato	cabbage	onion/leek	carrot	others
Lushoto	38,670	4,800	9,600	550	400
Hai	9,000	9,500	4,000	2,400	36,510
Iringa	101,952	10,695	11,088	-	1,521
Mbeya	4,940	3,510	1,170	1,079	1,521
Morogoro	?	-	?	-	127,548
Temeke	5,243	-	-	-	465
Total	159,805	28,505	25,858	4,029	167,965

Source (Orig.): Shao, F.M., A.M.S. Nyomora, E.E. Mlay and N.E. Kasunga, 2002. Study on the horticulture development in Tanzania.

Source (2<sup>nd</sup>): Overview of the vegetable sector in Tanzania (Feb. 2007), by AfriVeg, H. de Putter, M.J. van Koesveld and C.L.M. de Visser

## 2. Horticultural Production (2)

Table: Acreage in ha per Region of vegetable in 2002

District	tomato	cabbage	onion/leek	carrot	others
Lushoto	1,289	1,600	300	85	20
Hai	900	950	500	300	1,020
Iringa	4,248	713	1,584	-	117
Mbeya	380	270	90	83	117
Morogoro	?	-	?	-	5,102
Temeke	353	-	-	-	72
Total	7,170	3,533	2,474	468	6,448

Source (Orig.): Shao, F.M., A.M.S. Nyomora, E.E. Mlay and N.E. Kasunga, 2002. Study on the horticulture development in Tanzania.

Source (2<sup>nd</sup>): Overview of the vegetable sector in Tanzania (Feb. 2007), by AfriVeg, H. de Putter, M.J. van Koesveld and C.L.M. de Visser

### 3. Horticultural Policy and Strategy (1)

#### ASDP 2: [Agricultural Ecological Zone and Priority Commodities]

ASDP II Zonal Cluster	Priority Commodity Value Chain (CVC)	Regions
Southern Highland	Rice value chain development	Rukwa, Katavi, Mbeya, Iringa, Njombe, Morogoro, Songwe
	Potatoes (Irish and sweet) value chain development	
	Meat (beef) , poultry value chain development	
	Dairy value chain development	
	Tea/coffee value chain development	
	Horticulture value chain development	
	Sugarcane value chain development	
	Legumes & pulses (beans) value chain	

Source: ASDP 2, Programme Implementation Manual (PIM) (Feb. 2019)

### 3. Horticultural Policy and Strategy (2)

#### ASDP 2: [Agricultural Ecological Zone and Priority Commodities]

ASDP II Zonal Cluster	Priority Commodity Value Chain (CVC)	Regions
Northern Highlands	Coffee value chain development	Arusha, Kilimanjaro, Manyara
	Maize value chain development	
	Legumes & pulses (beans) value chain	
	Banana value chain development	
	Meat (beef) value chain development	
	Dairy value chain development	
	Horticulture value chain development	

Note: Tanga Region is included in the Coast Zone with Horticulture as one of the priority commodities.

Source: ASDP 2, Programme Implementation Manual (PIM) (Feb. 2019)

# 3. Horticultural Policy and Strategy (3)

## ASDP 2 Programme Component 3

### *~ Commercialization and Value Addition*

#### Sub-component 3.1: Marketing

- ◆ To build capacity of market actors ...
- ◆ To link farmers and entrepreneurs/ company with domestic and external market ...

#### Sub-component 3.2: Value addition and Agro-processing

- ◆ Mapping commodity agribusiness actors and develop needs assessment
- ◆ To facilitate business linkage
- ◆ To strengthen value chain for horticultural commodities

Source: ASDP 2, Programme Implementation Manual (PIM) (Feb. 2019)

# 3. Horticultural Policy and Strategy (4)

## ASDP 2 Programme Component 4

### *~ Strengthening Sector Enablers and Coordination*

#### Sub-component 4.2: Stakeholders' empowerment and organization

- ◆ To develop farmers profile
- ◆ To build organizational and technical capacity of farmers' organizations ...
- ◆ To link farmer organizations with various financial institutions ...

Source: ASDP 2, Programme Implementation Manual (PIM) (Feb. 2019)



# 4. Other activities relating to Horticulture

## SAGCOT

Table: SAGCOT Centre Strategic Partnerships List (in 2015/16 Annual Report)

No.	Strategic partnership	Investment Project	Location	Size (USD)	SHF Impacted
1	Seed coalition	SeedCo Tanzania Ltd	Nationwide	5.6M	-
2	Tomato partnership	Darsh (Tomato Partnership)	Iringa	6.7M	1,000
3	Financial working group	YARA International	Nationwide	20M	10,000
4	Potato partnership	Mtanga Foods (Potato Partnership)	Iringa	TBA	1,000

Note (1): SHF: Smallholder Farmers

(2): Other partnerships include "Dairy", "Rice", "Soy", "Sugar", "Edible Oil", "Tea", "Poultry", and "General partnership".

# 4. Other activities relating to Horticulture

## Horticulture Investment Seminar at Mbeya (June 17-18, 2019)

- ◆ Organized by TIC, SAGCOT and TAHA
- ◆ About 400 farmers and investors from Mbeya Region
- ◆ To Promote investment in horticulture production
- ◆ To learn modern production technologies, including farming, processing, storage, market search, and transport.

*Source: Daily News June 13, 2019*